

About Sateira CD&DVD Burner

Sateira CD&DVD Burner™ is a package of high quality programs for CD and DVD burning.

Package includes 4 stand-alone programs: [Data Burner](#), [Audio Burner](#), [DropToCD™ Lite](#) and [session commander](#).

[Data Burner](#) is a professional program for data CD and DVD creation and burning. It has very flexible data layout editor and fully customizable interface. With Data Burner you can create bootable CDs, DVDs or iso-images, multisession discs, erase rewritable discs and burn iso-images to disc directly. No temporary files needed.

It has built-in ASPI layer and doesn't use dll or ocx components.

[Audio Burner](#) is an easy to use program for audio CD and DVD creation and burning from your favorite wav files. Also with this program you can burn cue-images to disc directly.

[DropToCD™ Lite](#) is a lite edition of DropToCD (DataCD)™. The program offers a unique drop icon that floats on your desktop and allows you to quickly add multiple files from different locations by simply dragging them onto the icon.

The icon immediately calculates and displays the total size of your added data, so you know how much space you have left on your media. Then just do a rightclick and hit burn to burn disc. This is really fast and simple.

[Session commander](#) is a special utility for viewing and extracting session from multisession discs.

Features and benefits

Standard features include:

- Quick and complete erasing rewritable CDRW / DVD+RW / DVD-RW
- Make bootable discs and ISO-images
- Record Cue/ISO-image to disc directly
- Make ISO-images
- Speed and medium type autodetection
- Intuitive and easy to use interface
- and more...

Supported:

- Joliet and ISO9660 file systems
- BURN-Proof
- Testwrite
- OPC technology
- Finalize (close) disc
- Eject on complete
- Dates and copyrights
- and more...

Special features:

- Small size
- Low resources usage
- Record long names (up to 127 characters for files, 107 for folders)
- Record up to 70000 files and 10000 folders
- Built-in ASPI layer (custom ASPI layers are supported)
- No external dlls or ocxs
- No temporary files
- Professional, flexible disc layout editor
- Fast ISO-image building speed
- Supports CDR / RW, DVD+R / RW, DVD-R / RW, DVD-RAM
- Shows necessary information about drive and disc
- and more...

Trial limitations

[Sateira CD&DVD Burner trial limitations:](#)

- 5 days trial

Registration

Registration fee for Sateira CD&DVD Burner is only 35\$.

1 single license per 1 computer only.

After registration process is completed and your information approved you receive key via e-mail.

You can order copy [here](#).

For more information please e-mail to support@sateira.com or visit our website <http://www.sateira.com>.

Please read the license agreement.

License agreement

Sateira CD&DVD Burner®

Copyright © 2002-2004 Sateira Software

All rights reserved.

[Sateira CD&DVD Burner is shareware. This means:](#)

- 1.** You can use it freely to evaluate it but some functions are not available.
- 2.** All copyrights to Sateira CD&DVD Burner are exclusively owned by the Sateira Software.
- 3.** The unregistered trial version may be freely distributed, with exceptions noted below, provided the distribution package is not modified in any way.
 - No person or company may distribute separate parts of the package with the exception of the Sateira CD&DVD Burner components, without written permission of the copyright owner.
 - The unregistered trial version of Sateira CD&DVD Burner may not be distributed inside of any other software package without written permission of the copyright owner.
 - Hacks/cracks, keys or key generators may not be included on the same distribution.
- 4.** Sateira CD&DVD Burner is distributed "as is". No warranty of any kind is expressed or implied. You use at your own risk. Neither the author or the agents of the author will be liable for data loss, damages, loss of profits or any other kind of loss while using or misusing this software.
- 5.** You may not use, copy, emulate, clone, rent, lease, sell, modify, decompile, disassemble, otherwise reverse engineer, or transfer the licensed program, or any subset of the licensed program, except as provided for in this agreement. Any such unauthorized use shall result in immediate and automatic termination of this license and may result in criminal and/or civil prosecution.

All rights not expressly granted here are reserved by Sateira Software.

If you decide that you would like to continue using Sateira CD&DVD Burner, please register your copy.

Your registration will license you to use your copy of Sateira CD&DVD Burner, will support work on future versions, new features, and bug fixes, and will provide you with technical support via email.

Localization

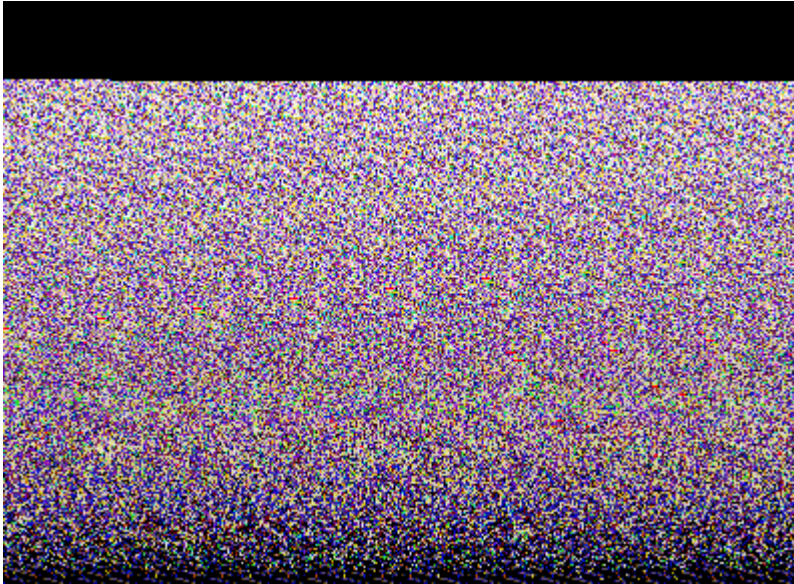
To translate program to your language please go to [Sateira Software website](#) and download language file.

Then extract scdb.lng from archive and copy to Sateira CD&DVD Burner main folder.

To make your own translation, please download template (english language) and edit it with notepad.

Interface overview

Main window



1. Burning toolbar.

There are five buttons: [Burn disc](#), [Burn ISO to disc](#), [Save ISO](#), [Erase disc](#) and [Options](#).

2. Data panel. Here you can choose necessary files and folders and to drag them on disc layout. Blue buttons will allow you to arrange data panel from any side or to close data panel. "discette" allows you to save the current way and to use it by default.

3. Disc layout panel. It is the basic panel of the program. Here you can place files and folders in that kind they will be on a disc. You can create, delete or rename files and folders and also to move from one directory in another. On the right click the menu shows up. Using it you can start file or review its properties. Also you can sort a sheet by columns and look through contents of directories.

4. Folder tree. Reflects treelike structure of directories. You can move one folder in another.

5. Status panel. The quantity of files and the folders added in the project, and also quantity borrowed and an empty place on the future disc at the left is displayed.

6. Disc size. Reflects the maximal size of a disc. On the right click the menu where you can choose the desirable size of a disc will appear or to see the size of an empty place directly from a disc.

Using Data Burner

After start the program you can see the drive and speed of recording in dropdown lists (Drive:).

The program scans system and fills in a sheet writing drives.

Recording speed is determined automatically after a choice of a drive. If the disc is inserted, the program will interrogate it and will expose as much as possible allowable speeds of recording. To update a sheet of speeds just click on it. At a choice of a drive recording speed is determined also automatically (Speed:).

Further you can see Disc label with format yy/mm/dd_hh/mm. You can change disc label and save it to use it by default in future (button " discette ").

The button with the picture of a drive will open a new window where you can look the detailed information about drive and disc.

Button 'Options' shows the options form where you can expose wishful values for the future disc (multisession, iso/joliet file system etc.).

After addition of the data and installation wishful options you can choose action from the main menu or from dropdown button, which is near to Write button (erase rewritable disc, save iso-image etc.).

For the greater convenience you can modify the program interface. For this purpose make use of blue buttons on the right on Data panel. Values will be saved after end.

For change of the maximal size of a disc just click on it and choose the necessary value from the list or enter it manually.

Options overview

- Eject on complete opens a tray after end of disc recording
- Finalize (close disc) it is used for closing cover of a drive with the disc. The subsequent recording will be impossible (even if there is an empty place on a disc)
- Bootable Allows to make a disc or iso-image loading. For this it is necessary to choose a loading file.

- ISO9660 file system is used for converting the data in format DOS. The length of a file name and directories will be equal to 12 symbols. If this option is not marked you can record files with length of a name up to 127 symbols and folders with length of a name up to 107 symbols.

- Testwrite will allow you to feign disc recording. There will be nothing recorded on a disc. This option is supported not by all drives.

- BURN-Proof allows to connect underrun buffer protection.

- New session creates a disc without importation of sessions
- Load last session creates a disc with importation last session
- Load session number creates a disc with importation of the session indicated by the user
- Replace files in layout replaces files in the project from session if names coincide

- More labels allows you to establish additional shortcuts
- Save options saves options and uses them by default
- Default restores original options

Preparing data

You can add the data from any file manager by Drag&Drop or from build-in explorer by pressing the button ' Add data '. You can create a folder and drag the data in it, and also rename a file or a folder. The build-in support drag&drop allows you to move files and folders from one directory in another. Also you can sort a sheet files by columns.

After addition of the data you can see quantity of files and folders, and their size below at the left. Progressbar will show you how much an empty place remain on a disc after recording.

Creating data disc

1. Add the data in the project
2. Establish necessary options
3. Press button 'Burn disc'

To create multisession disc press options and choose:

- Load last session for importation last session of a disc
- Load session number for importation indicated session (you can look through the list of sessions using build-in session commander)

Saving iso-image

1. Add the data in the project
2. Establish necessary options
3. Press the button (from the main menu or from the dropping out menu) save iso-image
4. Enter an iso-file name, and the saving will begin

Using Audio Burner

After start the program you can see the drive and speed of recording in dropdown lists (Drive:).

The program scans system and fills in a sheet writing drives.

Recording speed is determined automatically after a choice of a drive. If the disc is inserted, the program will interrogate it and will expose as much as possible allowable speeds of recording. To update a sheet of speeds just click on it. At a choice of a drive recording speed is determined also automatically (Speed:).

Further you can see Disc label with format yy/mm/dd_hh/mm. You can change disc label and save it to use it by default in future (button " discette ").

The button with the picture of a drive will open a new window where you can look the detailed information about drive and disc.

Button Options opens / closes the options panel where you can expose wishful values for the future disc.

After addition of the data and installation wishful options you can choose action from the main menu or from dropdown button, which is near to Write button (erase rewritable disc, burn cue-image etc.).

For the greater convenience you can modify the program interface. For this purpose make use of blue buttons on the right on Data panel. Values will be saved after end.

For change of the maximal size of a disc just click on it and choose the necessary value from the list or enter it manually.

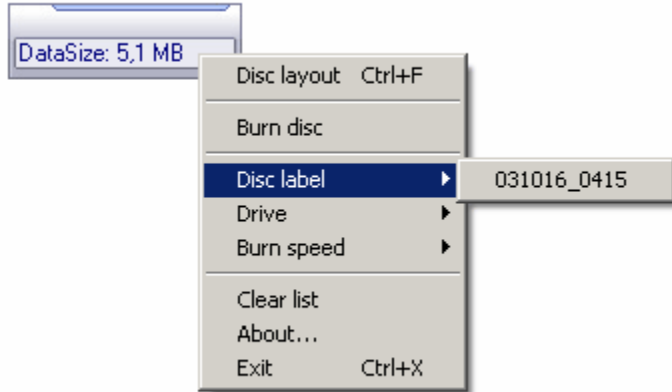
Preparing audio

You can add the tracks from any file manager by Drag&Drop or from build-in explorer by pressing the button ' Add tracks'.

Audio Burner supports *.wav files with 16Bit/44kHz Stereo (CD quality).

After addition of the data you can see quantity of files and folders, and their size below at the left. Progressbar will show you how much an empty place remain on a disc after recording.

Interface overview



After start you can see the window of the program atop of all windows. To add files just drag&drop from windows explorer. After dragging you will see the size of the data. Further just click the right button of the mouse on a window and choose action (change drive and speed, disc label). After that simply press button Burn to begin disc recording.

There is nothing easier!

v1.2

Release date: [04/02/04](#)

What's new:

Added:

- Memory cache option
- No multisession option
- Perform OPC option
- 'Close track' button
- 'Close session' button

Improved:

- Interface
- Many other improvements and fixes

v1.13

Release date: [21/01/04](#)

(!) - improved
(+) - added

What's new:
+ 'Dates' dialog

! Interface improvements
! Bug fixes and improvements

v1.12

Release date: [15/01/04](#)

(!) - improved

(+) - added

What's new:

+ Multilanguage support

! Bug fixes and improvements

v1.1

Release date: [07/01/04](#)

(!) - improved

(+) - added

What's new:

! Session commander

! Drive information dialog

! Bug fixes and improvements

ISO-9660 defines names to be the familiar 8+3 convention that MS-DOS users have suffered through for many years: eight characters for the name.

Quick erase is like erasing the directory off of a floppy disc. The file data is still there, but since there's nothing pointing to it, the disc appears empty.

Burn Proof or Underrun Protection. The technology allows you to avoid buffer underruns by suspending and restarting the write process when the recorder's buffer is about to empty.

Joliet is File or Directory Identifiers may be up to 128 bytes (64 unicode characters) in length. Some old Creative CD-ROM drivers have trouble with Joliet filenames.

Disc layout is the physical arrangement of information recorded onto your disc.

Bootable image used to allow PC boot from CD-ROM.

OPC is a special technique used for monitoring disc quality.

Complete erase erases entire the disc.

